

# LAKE NORMAN REGION / NORTH CAROLINA

## AVAILABLE OFFICE SPACE



**SERIOUS BUSINESS.  
SERIOUS FUN.**

### The Stowe Building

215 South Main Street  
Davidson, NC 28036



### DETAILS

<u>Size:</u>	23,000 square feet
<u>Location:</u>	Mecklenburg County
<u>Inside City:</u>	Yes (Davidson)
<u>Utilities:</u>	
<u>Water:</u>	CMUD
<u>Sewer:</u>	CMUD
<u>Gas:</u>	PNY
<u>Power:</u>	Duke
<u>Phone:</u>	AT & T

### Transportation:

<u>I-77:</u>	1.5 miles
<u>I-85:</u>	18 miles
<u>I-40:</u>	21 miles
<u>I-485:</u>	11 miles
<u>Hwy. 73:</u>	5 miles
<u>Airport:</u>	23 miles (CLT/Douglas)
<u>Rail:</u>	N/A
<u>Port:</u>	
Wilmington:	Approx. 200 miles
Charleston:	Approx. 200 miles

### PRICING

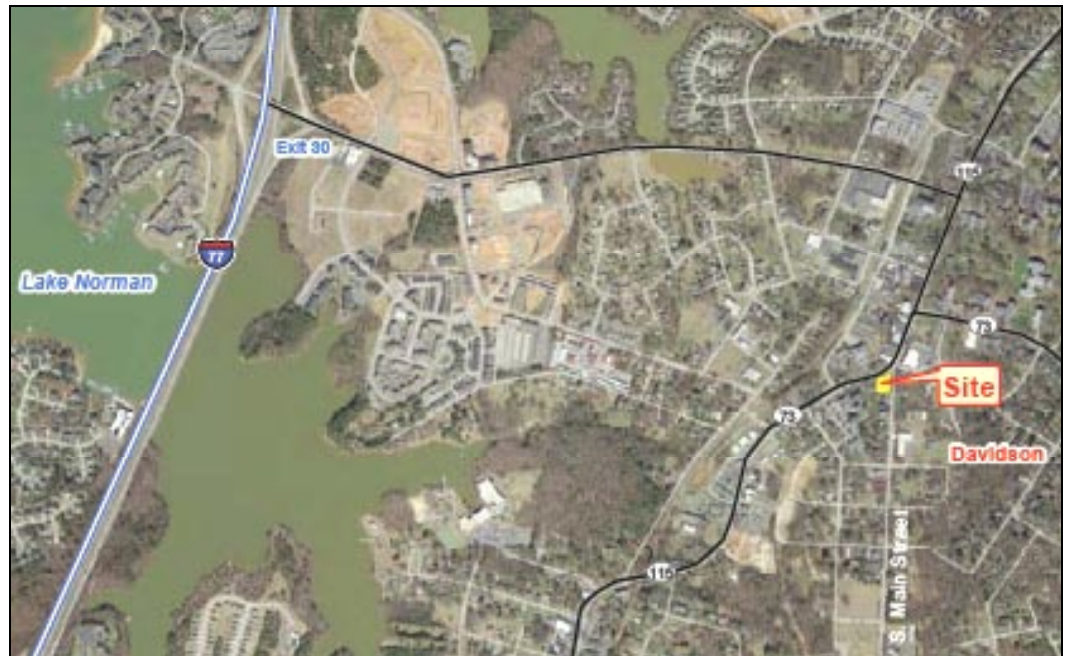
Sale Price:	\$ 225/sq. ft.
Lease Price:	\$ 25/sq. ft- Full Service

### CONTACT INFORMATION

Jerry Broadway CEcD  
Executive Director  
Lake Norman Regional EDC  
O: 704.992.2300  
E: jbbroadway@lakenormanregion.com

### ADDITIONAL INFORMATION

- Class A office space from 500 to 9,000 square feet available in charming downtown Davidson, North Carolina
- Minimum available square footage available is 500 square feet – can do custom suites
- Conveniently located only 1.5 miles from I-77
- Within walking distance to nearby retail and restaurants in the heart of town



**LAKE NORMAN REGION**  
NORTH CAROLINA

